



INSTRUCTION BULLETIN

No. 340171
Machine: 6080
Published: 6-98/00
System: SWEEPING

NOTE: DO NOT DISCARD the Parts List from the Instruction Bulletin. Place the Parts List in the appropriate place in your machine manual for future reference. Retaining the Parts List will make it easier to reorder individual parts and will save you the cost of ordering an entire kit.

NOTE: Numbers in parenthesis () are reference numbers for parts listed in Bill of Materials.

Installation instructions for kit number 373148

SYNOPSIS / PROBLEM:

This kit contains the parts needed to convert a model 6080 sweeper configured with the high airflow package to the reduced flow/live vacuum wand and panel filter configuration.

SPECIAL TOOLS / CONSIDERATIONS: None

(Estimated time to complete: 2 hours)

PREPARATION:

(Refer to FIG. 1 thru 4)

FOR SAFETY: Before leaving or servicing machine, stop on level surface and set parking brake. Then turn off machine and remove key.

1. Open the engine/battery cover and engage the prop rod.
2. Remove the debris hopper.
3. Unlatch and remove the filter cover. Disconnect vacuum hose from filter cover.
(Refer to FIG.1)

INSTALLATION:

(Refer to FIG. 1 thru 4)

1. Remove and discard the existing vacuum tube, hose, and cuff from the machine.
(Refer to FIG. 1)
2. Remove and discard the the hose elbow coupling from the filter cover. (Refer to FIG. 1)
3. Remove and discard the washers and seal from the frame. (Refer to FIG. 1)
4. **ELECTRIC MACHINE:** Disconnect and remove the battery located over the existing vacuum chamber.



WARNING: Always disconnect battery cables from machine before working on electrical components.

5. Remove and discard the battery spacer. (Refer to FIG. 1)
6. **LP MACHINE:** Remove the LP tank from the machine. Unlatch the two LP front panel locks and remove the panel from the machine.

7. Remove the hex screw holding the existing vacuum chamber in the machine. Remove the vacuum chamber from the machine. Remove the steel baffle from the vacuum chamber. Discard the vacuum chamber. Install the steel baffle into the new vacuum chamber (5).
(Refer to FIG. 1 and 2)
8. Install the new vacuum chamber seal (7) on the new vacuum chamber (5). (Refer to FIG. 2)
9. Install the new vacuum tube seal (6) on the end of the vacuum chamber (5). (Refer to FIG. 2)
10. Assemble the hose (1) to the wand (2) and cuff (3). Assemble the seal (4) to the cuff (3).
(Refer to FIG. 2)
11. Install the cuff into the frame. (Refer to FIG. 2)
12. Position the new vacuum chamber (5) into the machine. (Refer to FIG. 2)
13. Install the wand (2) and hose assembly through the frame, into the vacuum seal (6).
(Refer to FIG. 2)
14. Reinstall the hex screw and tighten the vacuum chamber (5). (Refer to FIG. 2)
15. Install the flange cover (8) and seal (4) over the hole in the filter cover using the screws supplied (9). (Refer to FIG. 3)
16. Reinstall the filter cover and re-latch.
17. Reinstall the debris hopper.
18. **Electric Machine:** Install battery and reconnect battery cables.
19. **LP Machine:** Reinstall the front cover and lock the tabs. Reinstall the LP tank.
20. Install the vacuum wand coupling (11) to the wand extension (10) as shown. Install assembly to existing brackets. (Refer to FIG. 4)
21. Start the machine and operate the sweeping function. Check for proper operation of the vacuum system.

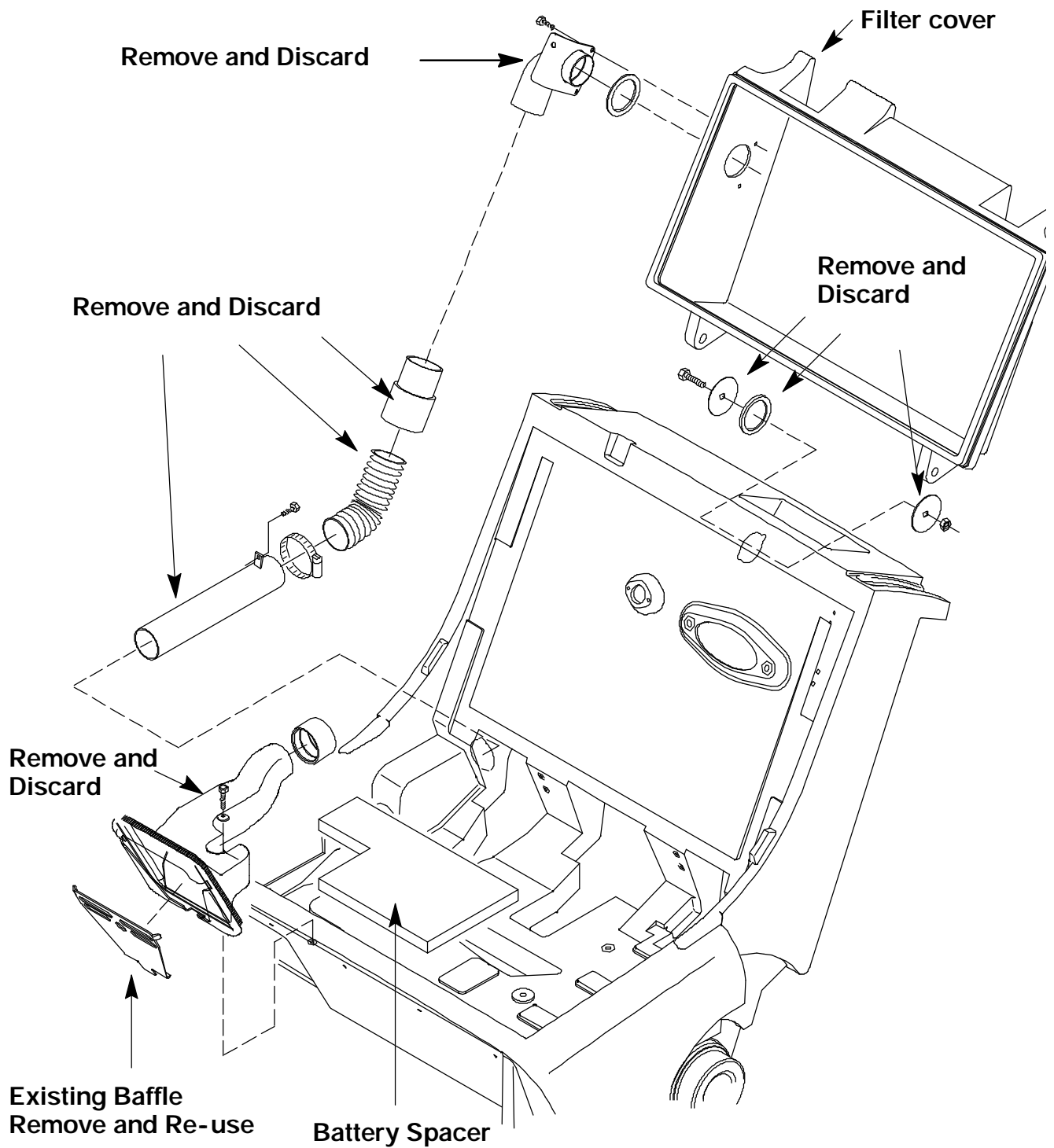


FIG. 1 High Air Flow Assembly Removal

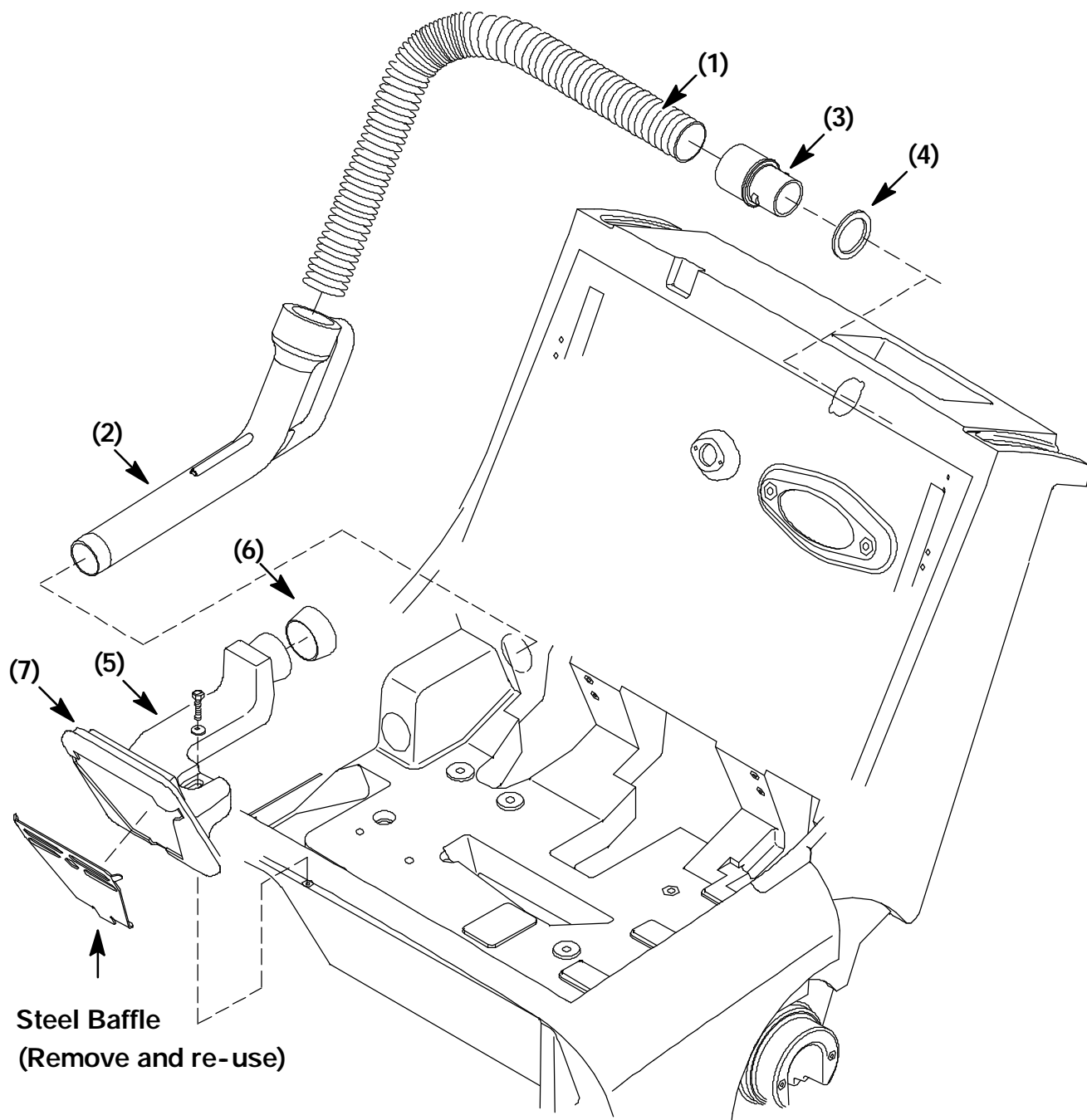


FIG. 2 Reduced Air Flow Assembly Installation

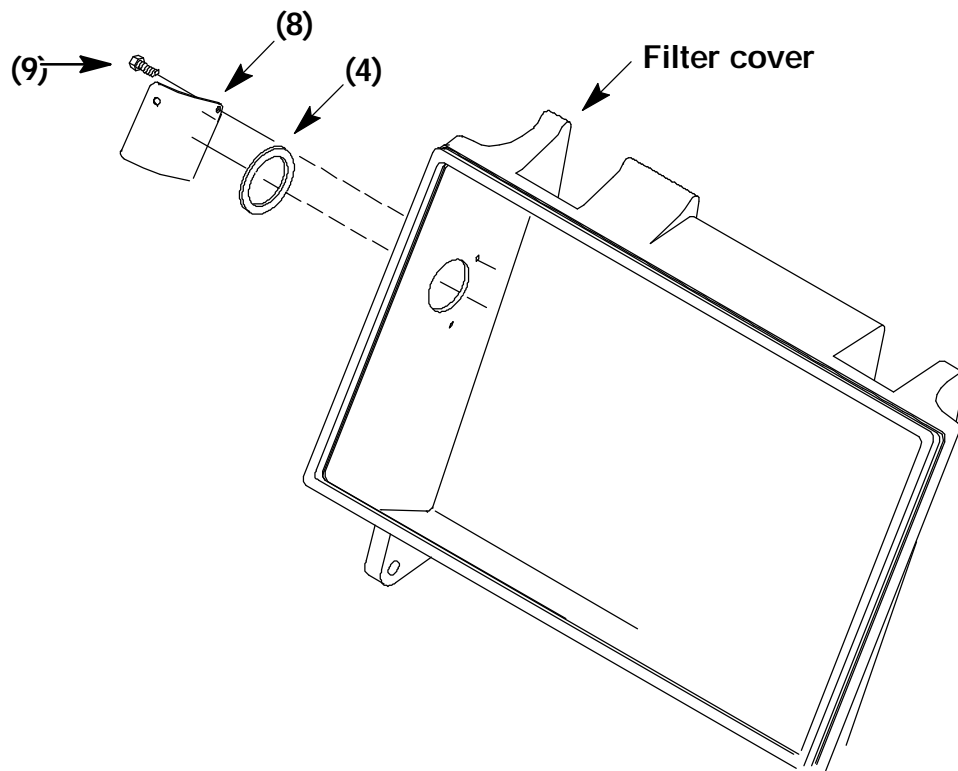


FIG. 3 Flange Cover Assembly

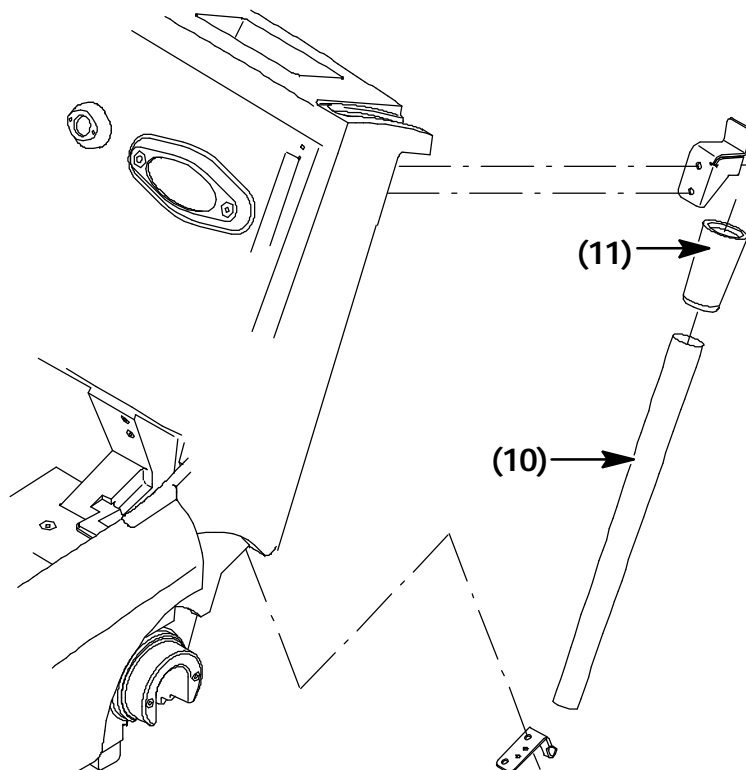


FIG. 4 Vacuum Wand Attachment Parts

BILL OF MATERIALS FOR REDUCED FLOW PANEL FILTER KIT 373148

Ref.	TENNANT Part No.	Description	Qty.
1	80464	Hose	1
2	373124	Wand	1
3	80270	Cuff	1
4	80392	Seal	2
5	373126	Vacuum chamber	1
6	373125	Seal, wand	1
7	80096	Seal, chamber	1
8	373145	Flange, cover	1
9	20394	Screw	3
10	80354	Vacuum wand extension	1
11	80299	Vacuum wand coupling	1
12	80103	Vacuum bag screen	1
13	80433	Vacuum bag tube	1
14	80432	Vacuum bag, disposable	1
15	09258	Pan screw, M6	2
16	41178	Flat washer, .25 in.	2
17	80062	Hole Plug, .81 in.	2

TENNANT COMPANY
P. O. Box 1452
Minneapolis, MN 55440-1452